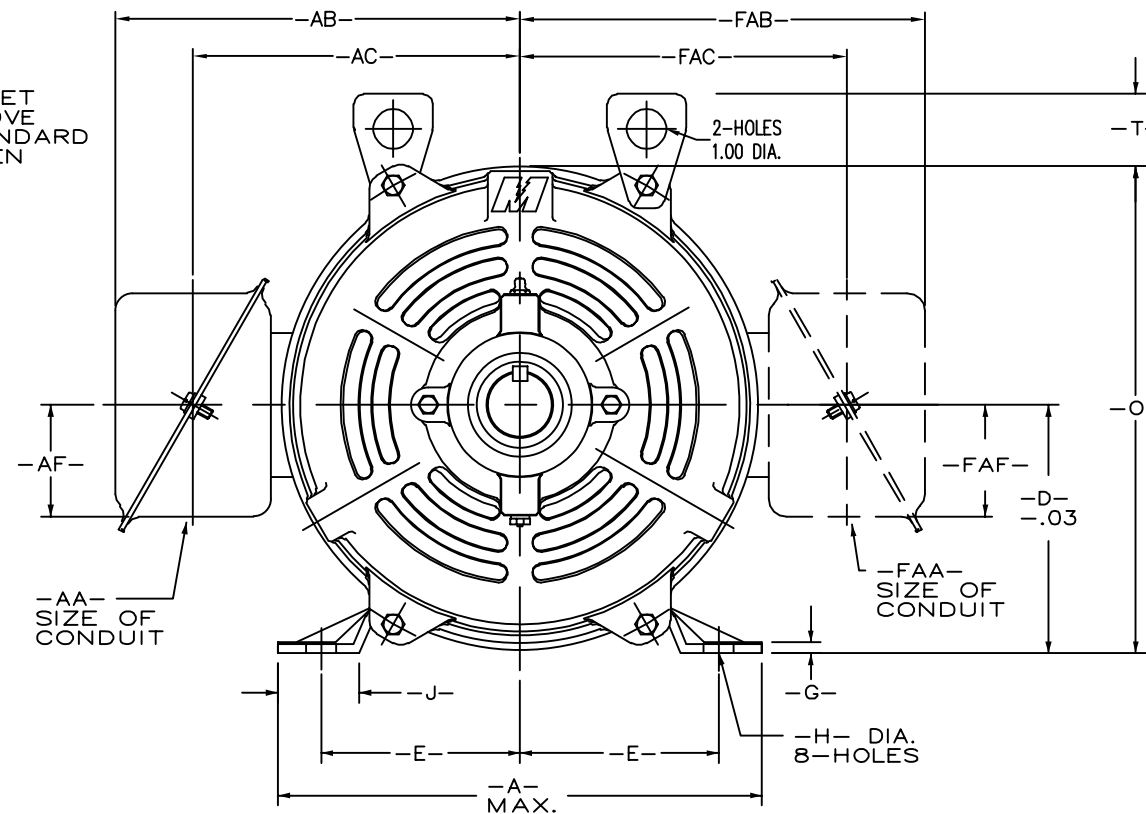
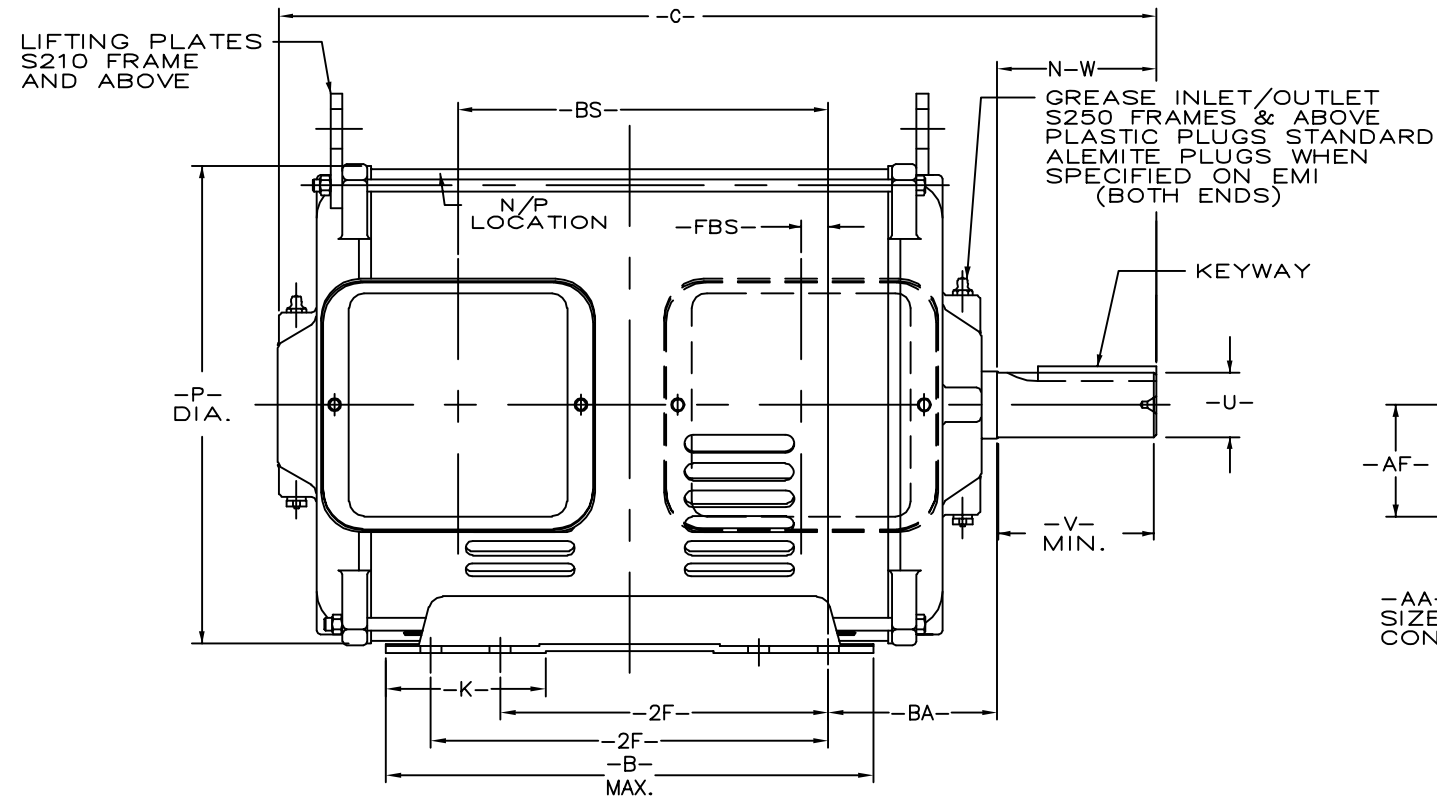


REV	ECO	REV BY	DATE	APPD	DATE
H	0003152	ccontr	12-13-2008	C. CONTRERAS	12-13-2008



FRAME	TERMINAL BOX F1 MTG					TERMINAL BOX F2 MTG					-BA-
	-AA-	-AB-	-AC-	-AF-	-BS-	-FAA-	-FAB-	-FAC-	-FAF-	-FBS-	
S180	3/4	7.63	5.94	2.50	4.94	3/4	7.00	5.63	2.16	0.56	2.75
S210	1	7.63	5.94	2.50	7.38	1	7.00	5.63	2.16	0.19	3.50
S250	1-1/4	10.19	8.16	2.81	9.32	1-1/4	10.19	8.25	2.85	0.68	4.25
G250	1-1/4	10.19	8.16	2.81	11.07	1-1/4	10.19	8.25	2.85	0.68	4.25
S280	1-1/2	10.19	8.16	2.81	10.32	1-1/2	10.19	8.25	2.85	0.68	4.75

-U- DIM.	TOL. ON -U- DIM.	SHAFT RUNOUT
OVERUP TO 1.500	+0.0000	TO 1.625
OVERDOWN TO 1.500	-0.0005	DOWN TO .002
	+0.000	DOWN TO .003
	-0.001	

CERTIFICATION OF A.C. MOTORS  
 CERTIFIED FOR \_\_\_\_\_ CERTIFICATION  
 SPEC. NO. \_\_\_\_\_ ORDER NO. \_\_\_\_\_ NO. \_\_\_\_\_  
 ORDER I.D. \_\_\_\_\_ I.D. NO. \_\_\_\_\_ EMI EMI  
 TYPE \_\_\_\_\_ TYPE \_\_\_\_\_ FRAME \_\_\_\_\_ FRAME \_\_\_\_\_ H.P.H.P.  
 R.P.M. RPM \_\_\_\_\_ VOLTS \_\_\_\_\_ VOLTS \_\_\_\_\_ PHASE PHASE  
 HERTZ HERTZ \_\_\_\_\_ AMPS \_\_\_\_\_ AMPS \_\_\_\_\_ CODE \_\_\_\_\_  
 REMARKS \_\_\_\_\_ REMARKS  
 REMARKS2 \_\_\_\_\_  
 APPROVED BY \_\_\_\_\_ APPROVED BY \_\_\_\_\_ DATE: DATE \_\_\_\_\_

FRAME	KEYWAY			-A-	-B-	-C-	-D-	-E-	-2F-	-G-	-H-	-J-	-K-	N-W	-O-	-P-	-T-	-U-	-V-
	WIDTH	DEPTH	LENGTH																
S182T	0.250	0.125	2.50	9.00	7.75	13.65	4.500	3.750	4.500	0.164	.406	1.48	2.93	2.75	8.78	8.53	----	1.125	2.75
S184T	0.250	0.125	2.50	9.00	7.75	13.65	4.500	3.750	5.500	0.164	.406	1.48	2.93	2.75	8.78	8.53	----	1.125	2.75
S213T	0.312	0.156	3.13	10.00	10.75	17.28	5.250	4.250	5.500	0.180	.406	1.58	3.43	3.38	9.53	8.57	1.77	1.375	3.25
S215T	0.312	0.156	3.13	10.00	10.75	17.28	5.250	4.250	7.000	0.180	.406	1.58	3.43	3.38	9.53	8.57	1.77	1.375	3.25
S254T	0.375	0.188	3.75	12.18	12.25	22.12	6.250	5.000	8.250	0.194	.531	2.06	4.06	4.00	12.25	12.00	1.82	1.625	3.88
G256T	0.375	0.188	3.75	12.18	12.25	23.85	6.250	5.000	8.250	0.194	.531	2.06	4.06	4.00	12.25	12.00	1.82	1.625	3.88
S256T	0.375	0.188	3.75	12.18	12.25	22.12	6.250	5.000	0.000	0.194	.531	2.06	4.06	4.00	12.25	12.00	1.82	1.625	3.88
S284T	0.500	0.250	4.38	12.75	13.25	24.25	7.000	5.500	9.500	0.194	.531	1.81	3.81	4.62	13.00	12.00	1.82	1.875	4.50
S284TS	0.375	0.188	3.00	12.75	13.25	22.88	7.000	5.500	9.500	0.194	.531	1.81	3.81	3.25	13.00	12.00	1.82	1.625	3.12
S286T	0.500	0.250	4.38	12.75	13.25	24.25	7.000	5.500	11.000	0.194	.531	1.81	3.81	4.62	13.00	12.00	1.82	1.875	4.50
S286TS	0.375	0.188	3.00	12.75	13.25	22.88	7.000	5.500	11.000	0.194	.531	1.81	3.81	3.25	13.00	12.00	1.82	1.625	3.12

800114  
800112  
ENG. REF.

GEOMETRIC CHARACTERISTICS & SYMBOLS  
 □ FLATNESS  
 - STRAIGHTNESS  
 < ANGLARITY  
 ⊥ PERPENDICULARITY (SQUARENESS)  
 // PARALLELISM  
 ○ ROUNDNESS (CIRCULARITY)  
 ∅ CYLINDRICITY  
 △ PROFILE OF ANY SURFACE  
 ∩ PROFILE OF ANY LINE  
 ↗ RUNOUT  
 ⊕ TRUE POSITION  
 ⊙ CONCENTRICITY  
 = SYMMETRY

UNLESS OTHERWISE SPECIFIED  
 DIM. TOLERANCES ARE AS FOLLOWS:  
 INCH X XX XXX XXXX  
 mm ±0.5 ±0.13 ±0.013  
 ANG. ±50 DEG  
 REMOVE BURRS & BREAK SHARP EDGES:  
 INCH .003-.015 mm 0.1-0.4  
 CORNER FILLETS TO:  
 INCH .020 mm 0.5  
 MACHINE SURFACES:  
 INCH 125 mm 3.2  
 METRIC DIMS. SHOWN IN [BRACKETS]

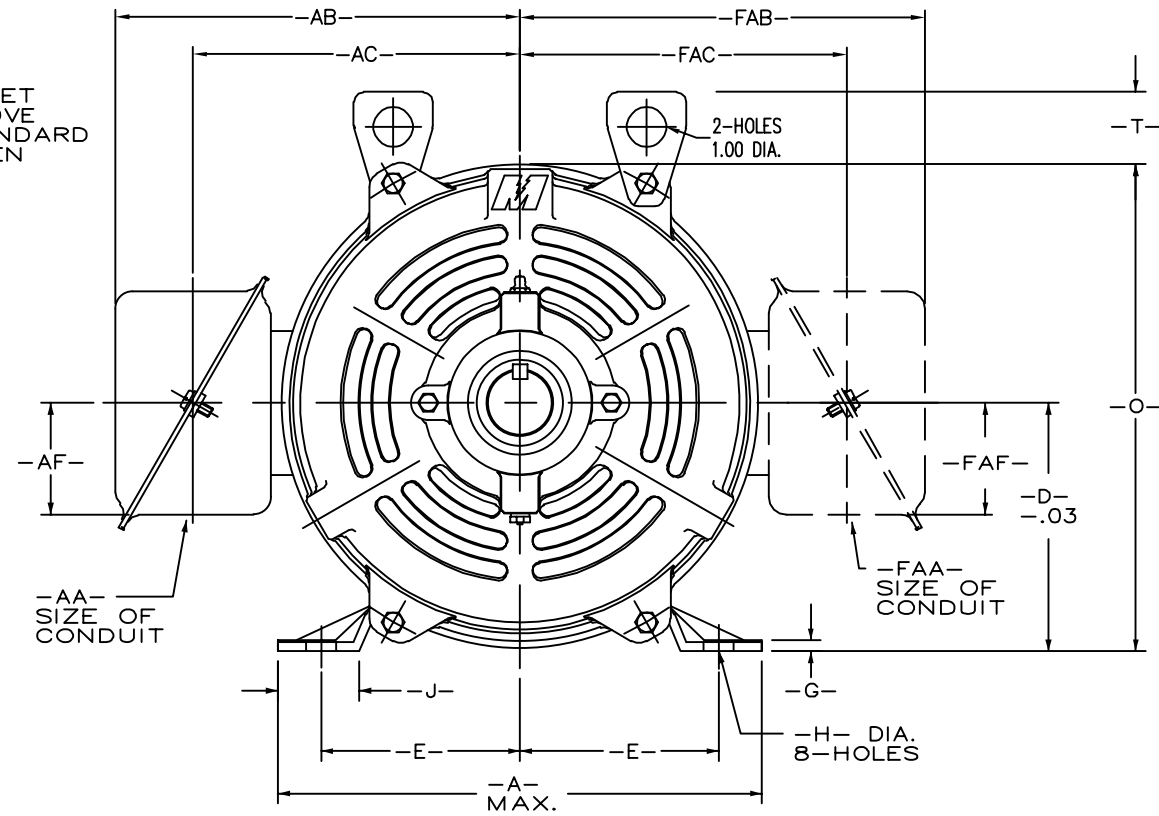
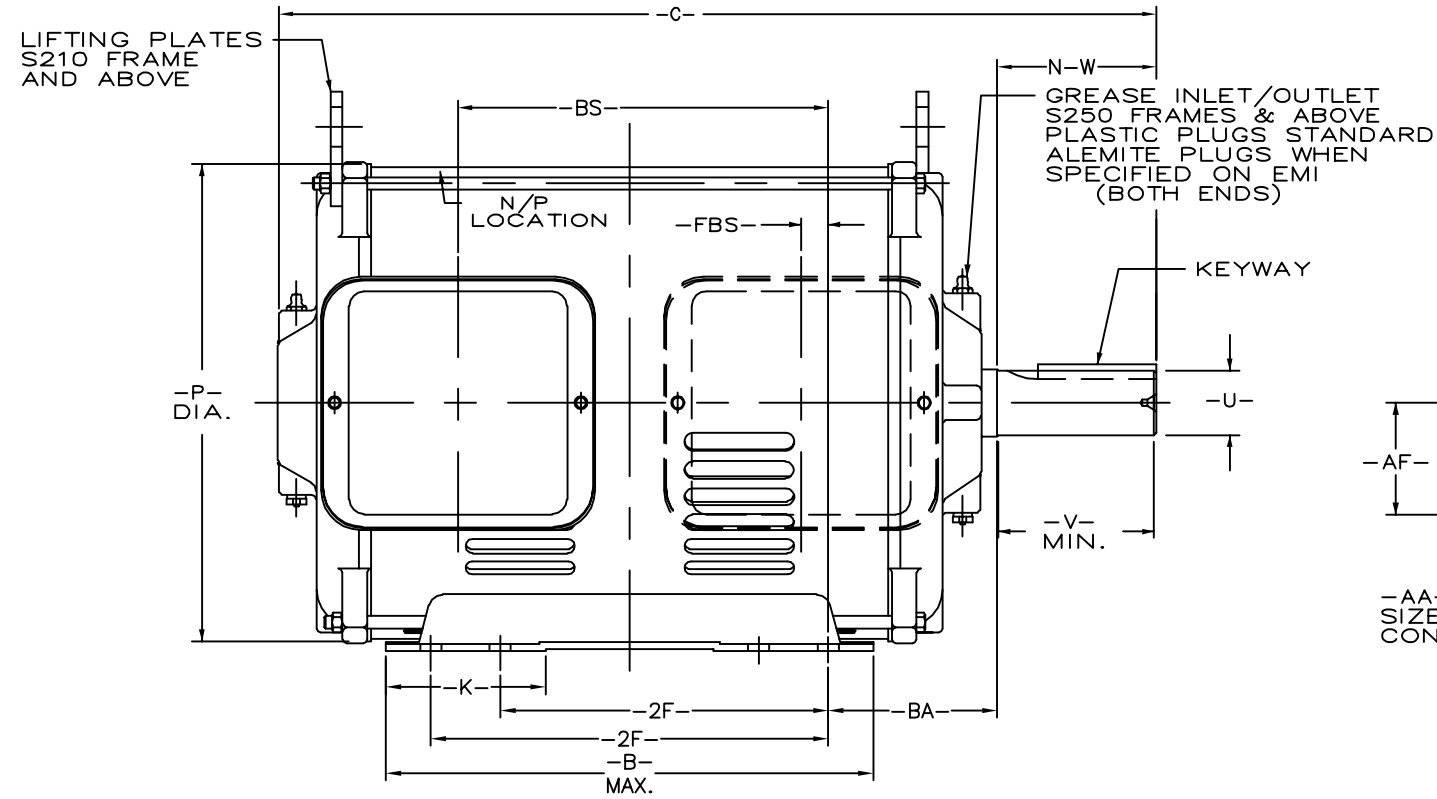
DR BY: SBC 04-25-1994  
 APPD: MAS 04-25-1994  
 THIRD ANGLE PROJECTION  
 EDS DATE EDS DATE  
 FORMAT REV F  
 CONFIDENTIAL: THIS DRAWING AND ITS INFORMATION ARE THE EXCLUSIVE AND CONFIDENTIAL PROPERTY OF A.O. SMITH CORP. AND ARE NOT TO BE DISCLOSED, DUPLICATED, DISTRIBUTED OR OTHERWISE USED WITHOUT THE WRITTEN CONSENT OF A.O. SMITH CORP.  
 -ALL RIGHTS RESERVED. ASME Y14.5M 1994



**ELECTRICAL PRODUCTS COMPANY**  
 A DIVISION OF A. O. SMITH CORPORATION

DESCRIPTION  
 MOT-S180/S280 F1/F2 STD T  
 SIZE C DWG NO 80009201  
 SCALE NONE SHEET 1

REVISION:	ECO	REVISADO POR:	FECHA:	APROBADO POR:	FECHA:
H	0003152	ccontr	12-13-2008	C. CONTRERAS	12-13-2008



FRAME	TERMINAL BOX F1 MTG					TERMINAL BOX F2 MTG					-BA-
	-AA-	-AB-	-AC-	-AF-	-BS-	-FAA-	-FAB-	-FAC-	-FAF-	-FBS-	
S180	3/4	7.63	5.94	2.50	4.94	3/4	7.00	5.63	2.16	0.56	2.75
S210	1	7.63	5.94	2.50	7.38	1	7.00	5.63	2.16	0.19	3.50
S250	1-1/4	10.19	8.16	2.81	9.32	1-1/4	10.19	8.25	2.85	0.68	4.25
G250	1-1/4	10.19	8.16	2.81	11.07	1-1/4	10.19	8.25	2.85	0.68	4.25
S280	1-1/2	10.19	8.16	2.81	10.32	1-1/2	10.19	8.25	2.85	0.68	4.75

OVERUP TO	-U- DIM.	TOL. ON -U- DIM.	SHAFT RUNOUT
	1.500	+0.000	
1.500	+0.000	-0.001	1.625
			0.003

CERTIFICATION OF A.C. MOTORS  
 CERTIFIED FOR \_\_\_\_\_ CERTIFICATION  
 SPEC. NO. \_\_\_\_\_ ORDER NO. \_\_\_\_\_ NO. \_\_\_\_\_  
 ORDER I.D. \_\_\_\_\_ I.D. NO. \_\_\_\_\_ EMI EMI  
 TYPE \_\_\_\_\_ TYPE \_\_\_\_\_ FRAME \_\_\_\_\_ FRAME \_\_\_\_\_ H.P.H.P.  
 R.P.M. RPM \_\_\_\_\_ VOLTS \_\_\_\_\_ VOLTS \_\_\_\_\_ PHASE PHASE  
 HERTZ HERTZ \_\_\_\_\_ AMPS \_\_\_\_\_ AMPS \_\_\_\_\_ CODE \_\_\_\_\_  
 REMARKS \_\_\_\_\_ REMARKS  
 REMARKS2 \_\_\_\_\_  
 APPROVED BY \_\_\_\_\_ APPROVED BY \_\_\_\_\_ DATE: DATE \_\_\_\_\_

FRAME	KEYWAY			-A-	-B-	-C-	-D-	-E-	-2F-	-G-	-H-	-J-	-K-	N-W	-O-	-P-	-T-	-U-	-V-
	WIDTH	DEPTH	LENGTH																
S182T	0.250	0.125	2.50	9.00	7.75	13.65	4.500	3.750	4.500	0.164	.406	1.48	2.93	2.75	8.78	8.53	----	1.125	2.75
S184T	0.250	0.125	2.50	9.00	7.75	13.65	4.500	3.750	5.500	0.164	.406	1.48	2.93	2.75	8.78	8.53	----	1.125	2.75
S213T	0.312	0.156	3.13	10.00	10.75	17.28	5.250	4.250	5.500	0.180	.406	1.58	3.43	3.38	9.53	8.57	1.77	1.375	3.25
S215T	0.312	0.156	3.13	10.00	10.75	17.28	5.250	4.250	7.000	0.180	.406	1.58	3.43	3.38	9.53	8.57	1.77	1.375	3.25
S254T	0.375	0.188	3.75	12.18	12.25	22.12	6.250	5.000	8.250	0.194	.531	2.06	4.06	4.00	12.25	12.00	1.82	1.625	3.88
G256T	0.375	0.188	3.75	12.18	12.25	23.85	6.250	5.000	8.250	0.194	.531	2.06	4.06	4.00	12.25	12.00	1.82	1.625	3.88
S256T	0.375	0.188	3.75	12.18	12.25	22.12	6.250	5.000	0.000	0.194	.531	2.06	4.06	4.00	12.25	12.00	1.82	1.625	3.88
S284T	0.500	0.250	4.38	12.75	13.25	24.25	7.000	5.500	9.500	0.194	.531	1.81	3.81	4.62	13.00	12.00	1.82	1.875	4.50
S284TS	0.375	0.188	3.00	12.75	13.25	22.88	7.000	5.500	9.500	0.194	.531	1.81	3.81	3.25	13.00	12.00	1.82	1.625	3.12
S286T	0.500	0.250	4.38	12.75	13.25	24.25	7.000	5.500	11.000	0.194	.531	1.81	3.81	4.62	13.00	12.00	1.82	1.875	4.50
S286TS	0.375	0.188	3.00	12.75	13.25	22.88	7.000	5.500	11.000	0.194	.531	1.81	3.81	3.25	13.00	12.00	1.82	1.625	3.12

S00114  
 S00112  
 ENG. REF.

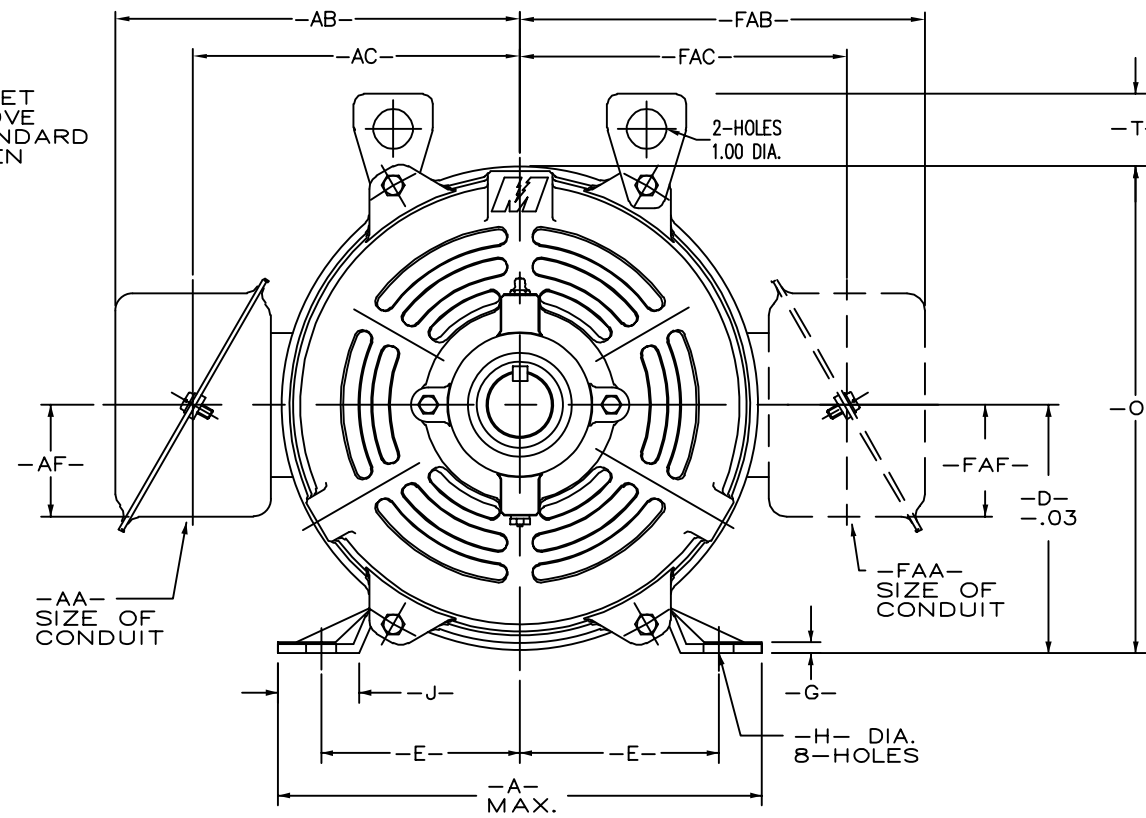
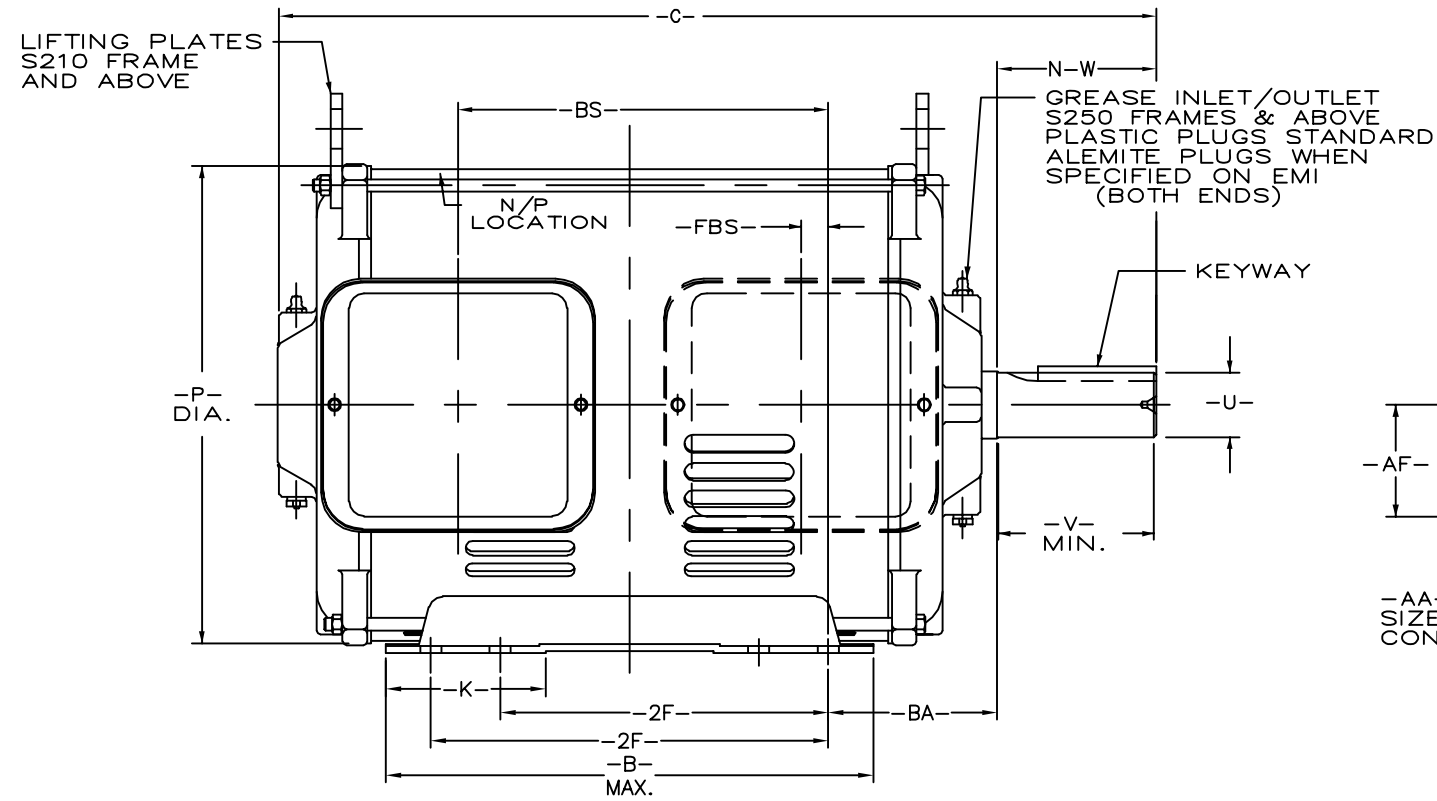
CARACTERISTICAS DE GEOMETRIA Y SIMBOLOS  
 ▽ PLANICIDAD  
 - RECTITUD  
 < ANGULARIDAD  
 ⊥ PERPENDICULARIDAD (A ESCUADRA)  
 // PARALELISMO  
 ○ REDONDEZ (CIRCULARIDAD)  
 ∅ CILINDRICIDAD  
 △ PERFIL DE CUALQUIER SUPERFICIE  
 ∩ PERFIL DE CUALQUIER LINEA  
 ∩ VARIACION  
 ⊕ POSICION REAL  
 ⊙ CONCENTRICIDAD  
 = SIMETRIA

A MENOS QUE SE ESPECIFIQUE DE OTRA MANERA, LAS TOLERANCIAS DE LAS DIMS; SON LAS SIGUIENTES:  
 PULG ±.1 ±.02 ±.005 ±.0005  
 mm ±0.5 ±0.13 ±0.013  
 ANG. ±50 GRADOS  
 ELIMINAR REBABAS Y ORILLAS FILOSAS DEL BORDE.  
 PULG .003-.015 mm 0.1-0.4  
 FILETEAR ESQUINA: PULG .020 mm 0.5  
 MAQUINAR SUPERFICIES  
 PULG 125 mm 3.2  
 DIMS METRICAS MOSTRADAS [PARENTESIS]

DIBUJADO POR: SBC 04-25-1994  
 APROBADO POR: MAS 04-25-1994  
 TERCER ANGULO DE PROYECCION  
 CONFIDENCIAL: ESTE DIBUJO Y SU INFORMACION SON PROPIEDAD DE USO EXCLUSIVO Y CONFIDENCIAL DE A.O.SMITH CORP. Y NO DEBERAN SER REVELADOS, DUPLICADOS, DISTRIBUIDOS O USARSE DE OTRA MANERA SIN EL CONSENTIMIENTO ESCRITO DE A.O. SMITH CORP. -TODOS LOS DERECHOS RESERVADOS.ASME Y14.5M 1994

**AC Smith** **ELECTRICAL PRODUCTS COMPANY**  
 Innovation has a name. A DIVISION OF A. O. SMITH CORPORATION  
 DESCRIPCION: **OUTLINE**  
**MOT-S180/S280 F1/F2 STD T**  
 TAMAÑO: C NUMERO DE DIBUJO: 80009201  
 ESCALA: NONE HOJA: 1

版本	ECO	编制	日期	批准	日期
H	0003152	ccontr	12-13-2008	C. CONTRERAS	12-13-2008



FRAME	TERMINAL BOX F1 MTG					TERMINAL BOX F2 MTG					-BA-
	-AA-	-AB-	-AC-	-AF-	-BS-	-FAA-	-FAB-	-FAC-	-FAF-	-FBS-	
S180	3/4	7.63	5.94	2.50	4.94	3/4	7.00	5.63	2.16	0.56	2.75
S210	1	7.63	5.94	2.50	7.38	1	7.00	5.63	2.16	0.19	3.50
S250	1-1/4	10.19	8.16	2.81	9.32	1-1/4	10.19	8.25	2.85	0.68	4.25
G250	1-1/4	10.19	8.16	2.81	11.07	1-1/4	10.19	8.25	2.85	0.68	4.25
S280	1-1/2	10.19	8.16	2.81	10.32	1-1/2	10.19	8.25	2.85	0.68	4.75

OVERUP TO	-U- DIM.	TOL. ON -U- DIM.	SHAFT RUNOUT
	1.500	+0.000	
1.500	+0.000	-0.001	1.625

CERTIFICATION OF A.C. MOTORS  
 CERTIFIED FOR \_\_\_\_\_ CERTIFICATION  
 SPEC. NO. \_\_\_\_\_ ORDER NO. \_\_\_\_\_ NO. \_\_\_\_\_  
 ORDER I.D. \_\_\_\_\_ I.D. NO. \_\_\_\_\_ EMI EMI  
 TYPE \_\_\_\_\_ TYPE \_\_\_\_\_ FRAME \_\_\_\_\_ FRAME \_\_\_\_\_ H.P.H.P.  
 R.P.M. RPM \_\_\_\_\_ VOLTS \_\_\_\_\_ VOLTS \_\_\_\_\_ PHASE PHASE  
 HERTZ HERTZ \_\_\_\_\_ AMPS \_\_\_\_\_ AMPS \_\_\_\_\_ CODE \_\_\_\_\_  
 REMARKS \_\_\_\_\_ REMARKS  
 REMARKS2 \_\_\_\_\_  
 APPROVED BY \_\_\_\_\_ APPROVED BY \_\_\_\_\_ DATE: DATE

FRAME	KEYWAY			-A-	-B-	-C-	-D-	-E-	-2F-	-G-	-H-	-J-	-K-	N-W	-O-	-P-	-T-	-U-	-V-
	WIDTH	DEPTH	LENGTH																
S182T	0.250	0.125	2.50	9.00	7.75	13.65	4.500	3.750	4.500	0.164	.406	1.48	2.93	2.75	8.78	8.53	----	1.125	2.75
S184T	0.250	0.125	2.50	9.00	7.75	13.65	4.500	3.750	5.500	0.164	.406	1.48	2.93	2.75	8.78	8.53	----	1.125	2.75
S213T	0.312	0.156	3.13	10.00	10.75	17.28	5.250	4.250	5.500	0.180	.406	1.58	3.43	3.38	9.53	8.57	1.77	1.375	3.25
S215T	0.312	0.156	3.13	10.00	10.75	17.28	5.250	4.250	7.000	0.180	.406	1.58	3.43	3.38	9.53	8.57	1.77	1.375	3.25
S254T	0.375	0.188	3.75	12.18	12.25	22.12	6.250	5.000	8.250	0.194	.531	2.06	4.06	4.00	12.25	12.00	1.82	1.625	3.88
G256T	0.375	0.188	3.75	12.18	12.25	23.85	6.250	5.000	8.250	0.194	.531	2.06	4.06	4.00	12.25	12.00	1.82	1.625	3.88
S256T	0.375	0.188	3.75	12.18	12.25	22.12	6.250	5.000	0.000	0.194	.531	2.06	4.06	4.00	12.25	12.00	1.82	1.625	3.88
S284T	0.500	0.250	4.38	12.75	13.25	24.25	7.000	5.500	9.500	0.194	.531	1.81	3.81	4.62	13.00	12.00	1.82	1.875	4.50
S284TS	0.375	0.188	3.00	12.75	13.25	22.88	7.000	5.500	9.500	0.194	.531	1.81	3.81	3.25	13.00	12.00	1.82	1.625	3.12
S286T	0.500	0.250	4.38	12.75	13.25	24.25	7.000	5.500	11.000	0.194	.531	1.81	3.81	4.62	13.00	12.00	1.82	1.875	4.50
S286TS	0.375	0.188	3.00	12.75	13.25	22.88	7.000	5.500	11.000	0.194	.531	1.81	3.81	3.25	13.00	12.00	1.82	1.625	3.12

S00114  
 S00112  
 ENG. REF.

- 形位公差
- 平面度
- 直线度
- ∠ 倾斜度
- ⊥ 垂直度
- // 平行度
- 圆度
- ⊙ 圆柱度
- △ 面轮廓度
- △ 线轮廓度
- ∩ 圆跳动
- ⊕ 位置度
- ⊗ 同轴度
- ≡ 对称度

除另有注明  
 尺寸公差如下:  
 英寸 X XX XXX XXXX  
 毫米 ±0.1 ±0.02 ±0.005 ±0.0005  
 毫米 ±0.5 ±0.13 ±0.013  
 角度 ±.50 度  
 清理毛刺和尖棱  
 英寸 .003-.015 毫米 0.1-0.4  
 内圆角  
 英寸 .020 毫米 0.5  
 表面粗糙度  
 英制 125 米制 3.2  
 米制尺寸显示在 [ ]

绘图: SBC 04-25-1994  
 批准: MAS 04-25-1994  
 第三角投影  
 图纸格式发布日期 EDS DATE  
 图纸格式版本 F  
 机密: 本图纸及相关信息所有权归A. O. SMITH公司所有。  
 未经A. O. SMITH公司书面授权, 不得泄露、复制、传播或作  
 其他用途。—版权所有  
 ASME Y14.5M 1994

**ACSmith** **ELECTRICAL PRODUCTS COMPANY**  
 Innovation has a name. A DIVISION OF A. O. SMITH CORPORATION  
 名称: MOT-S180/S280 F1/F2 STD T  
 图幅: C 图号: 80009201  
 比例: NONE 页号: 1