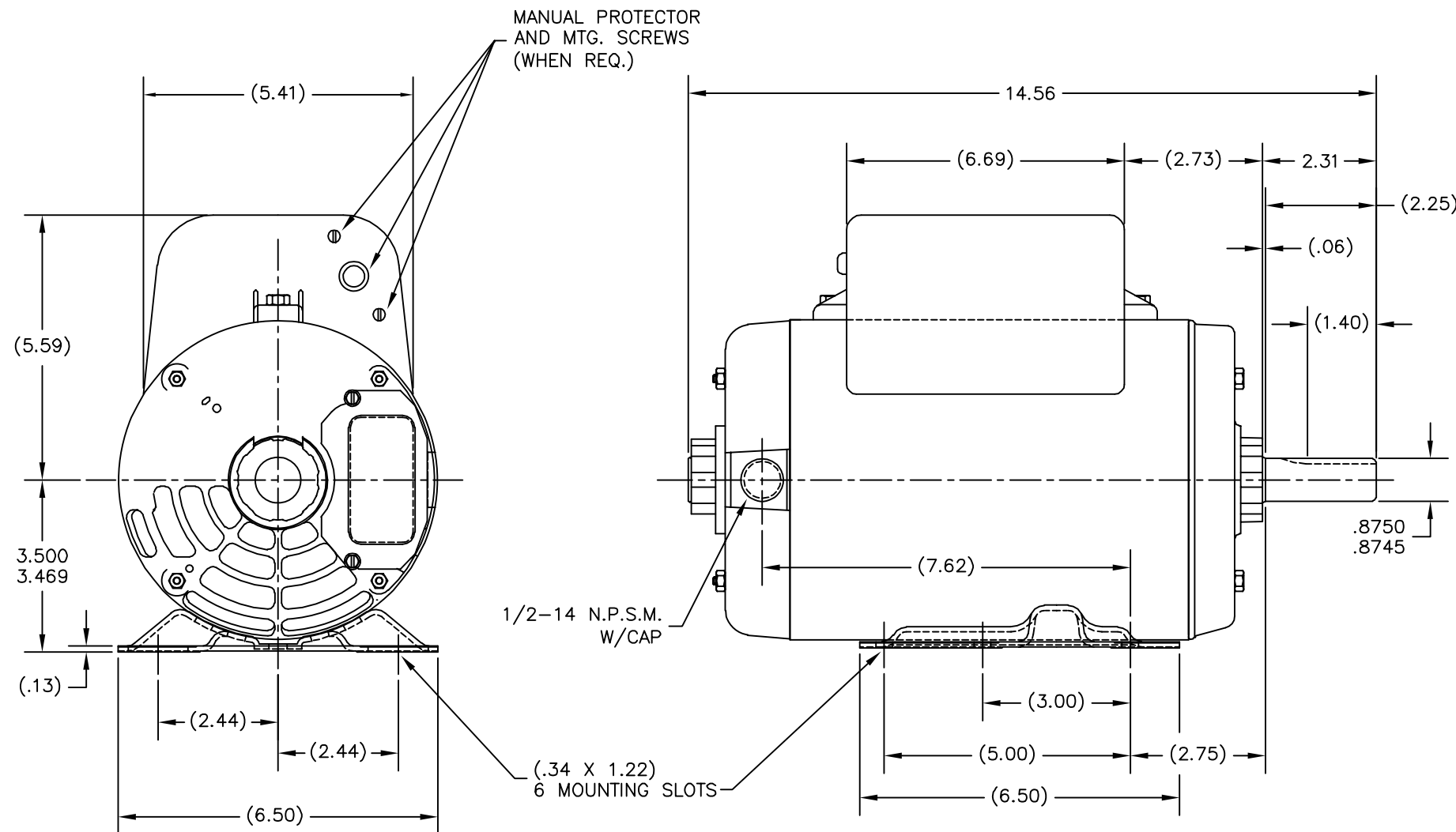


REV	ECO	REV BY	DATE	APPD	DATE
E	0025366	J.M.Ramirez	04-13-2012	R.Rascon	04-13-2012

ALL DIMENSIONS SHOWN IN PARENTHESIS
ARE REFERENCE DIMENSIONS. ALL
OTHER DIMENSIONS ARE TOLERANCED PER
THE FOLLOWING CHART UNLESS
OTHERWISE SPECIFIED.

"C" DIM.	= +/- .055
SHAFT EXT.	= +/- .034
LEAD LENGTHS	= +/- 1.00
EXTENDED THRU-BOLTS	= +/- .050



NOTE:

TERMINAL BOX TO BE LOCATED
AT 12:00 WITHIN +/- 1 1/2"

GEOMETRIC CHARACTERISTICS & SYMBOLS
□ FLATNESS
— STRAIGHTNESS
∠ ANGULARITY
⊥ PERPENDICULARITY (SQUARENESS)
// PARALLELISM
○ ROUNDNESS (CIRCULARITY)
⌀ CYLINDRICITY
△ PROFILE OF ANY SURFACE
— PROFILE OF ANY LINE
↑ RUNOUT
⊕ TRUE POSITION
◎ CONCENTRICITY
≡ SYMMETRY

ASME Y14.5M 1994

UNLESS OTHERWISE SPECIFIED
DIM. TOLERANCES ARE AS FOLLOWS:
INCH X XX XXX XXXX
mm ±0.1 ±0.2 ±0.005 ±0.0005
mm ±0.5 ±0.13 ±0.013
ANG. ±50 DEG
REMOVE BURRS & BREAK SHARP EDGES:
INCH .003-.015 mm 0.1-0.4
CORNER FILLETS TO:
INCH .020 mm 0.5
MACHINE SURFACES:
INCH 125 mm 3.2
METRIC DIMS. SHOWN IN [BRACKETS]

DR BY:

JAH

APPD:

THIRD ANGLE PROJECTION



EDS DATE 11-11-2011
FORMAT REV G

CONFIDENTIAL: THIS DRAWING AND ITS INFORMATION ARE
THE EXCLUSIVE AND CONFIDENTIAL PROPERTY OF REGAL-
BELOIT CORPORATION AND ARE NOT TO BE DISCLOSED,
DUPLICATED, DISTRIBUTED OR OTHERWISE USED WITHOUT
THE WRITTEN CONSENT OF REGAL-BELOIT CORPORATION.
-ALL RIGHTS RESERVED.



REGAL-BELOIT CORPORATION

DESCRIPTION

MODEL-CFHP-56FR
OUTLINE

SIZE

C

DWG NO

179714

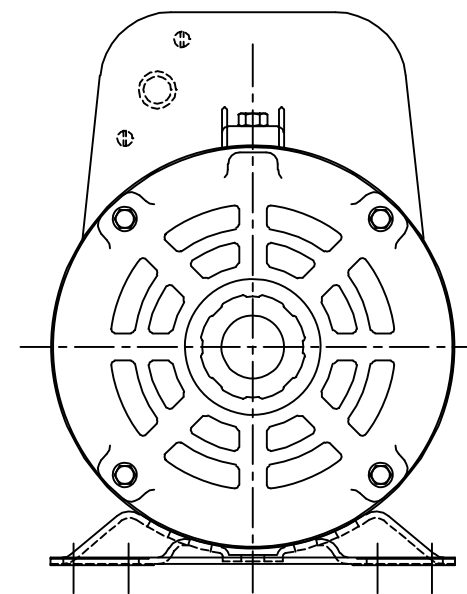
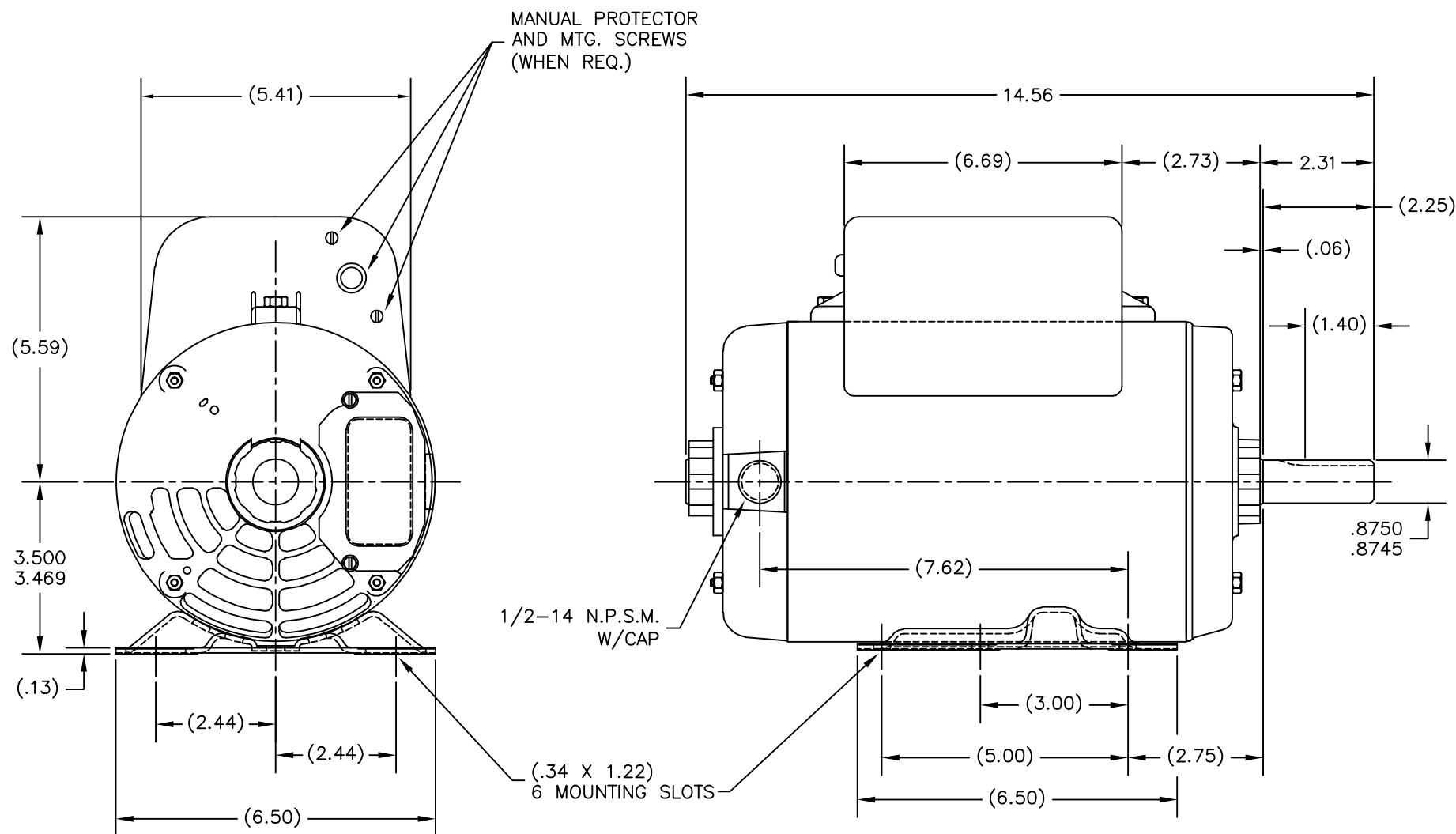
SCALE NONE

SHEET 1

REVISION:	ECO	REVISADO POR:	FECHA:	APROBADO POR:	FECHA:
E	0025366	J.M.Ramirez	04-13-2012	R.Rascon	04-13-2012

ALL DIMENSIONS SHOWN IN PARENTHESIS
ARE REFERENCE DIMENSIONS. ALL
OTHER DIMENSIONS ARE TOLERANCED PER
THE FOLLOWING CHART UNLESS
OTHERWISE SPECIFIED.

"C" DIM.	= +/- .055
SHAFT EXT.	= +/- .034
LEAD LENGTHS	= +/- 1.00
EXTENDED THRU-BOLTS	= +/- .050



NOTE:

TERMINAL BOX TO BE LOCATED
AT 12:00 WITHIN +/- 1 1/2"

CARACTERISTICAS DE GEOMETRIA Y SIMBOLOS

- PLANICIDAD
- RECTITUD
- ANGULARIDAD
- PERPENDICULARIDAD (A ESCUADRA)
- PARALELISMO
- REDONDEZ (CIRCULARIDAD)
- CILINDRICIDAD
- PERFIL DE CUALQUIER SUPERFICIE
- PERFIL DE CUALQUIER LINEA
- VARIACION
- POSICION REAL
- CONCENTRICIDAD
- SIMETRIA

ASME Y14.5M 1994

A MENOS QUE SE ESPECIFIQUE DE OTRA MANERA, LAS TOLERANCIAS DE LAS DIMS. SON LAS SIGUIENTES:

PULG	±.1	±.02	±.005	±.0005
mm	±0.5	±0.13	±0.013	

ANG. ±.50 GRADOS

ELIMINAR REBABAS Y ORILLAS FILOSAS DEL BORDE.

PULG	.003-.015	mm	0.1-0.4
------	-----------	----	---------

FILETEAR ESQUINA: PULG .020 mm 0.5

MAQUINAR SUPERFICIES

PULG	.125	mm	.32
------	------	----	-----

DIMS METRICAS MOSTRADAS [PARENTESIS]

DIBUJADO POR: JAH

APROBADO POR:

TERCER ANGULO DE PROYECCION

FECHA EDS: 11-11-2011

REV. FORMATO: G

CONFIDENCIAL: ESTE DIBUJO Y SU INFORMACION SON PROPIEDAD DE USO EXCLUSIVO Y CONFIDENCIAL DE REGAL-BELOIT CORPORATION. Y NO DEBERAN SER REVELADOS, DUPLICADOS, DISTRIBUIDOS O USARSE DE OTRA MANERA SIN EL CONSENTIMIENTO ESCRITO DE REGAL-BELOIT CORPORATION. -TODOS LOS DERECHOS RESERVADOS.

REGAL-BELOIT CORPORATION

DESCRIPCION: MODEL-CFHP-56FR OUTLINE

TAMAÑO: C

NUMERO DE DIBUJO: 179714

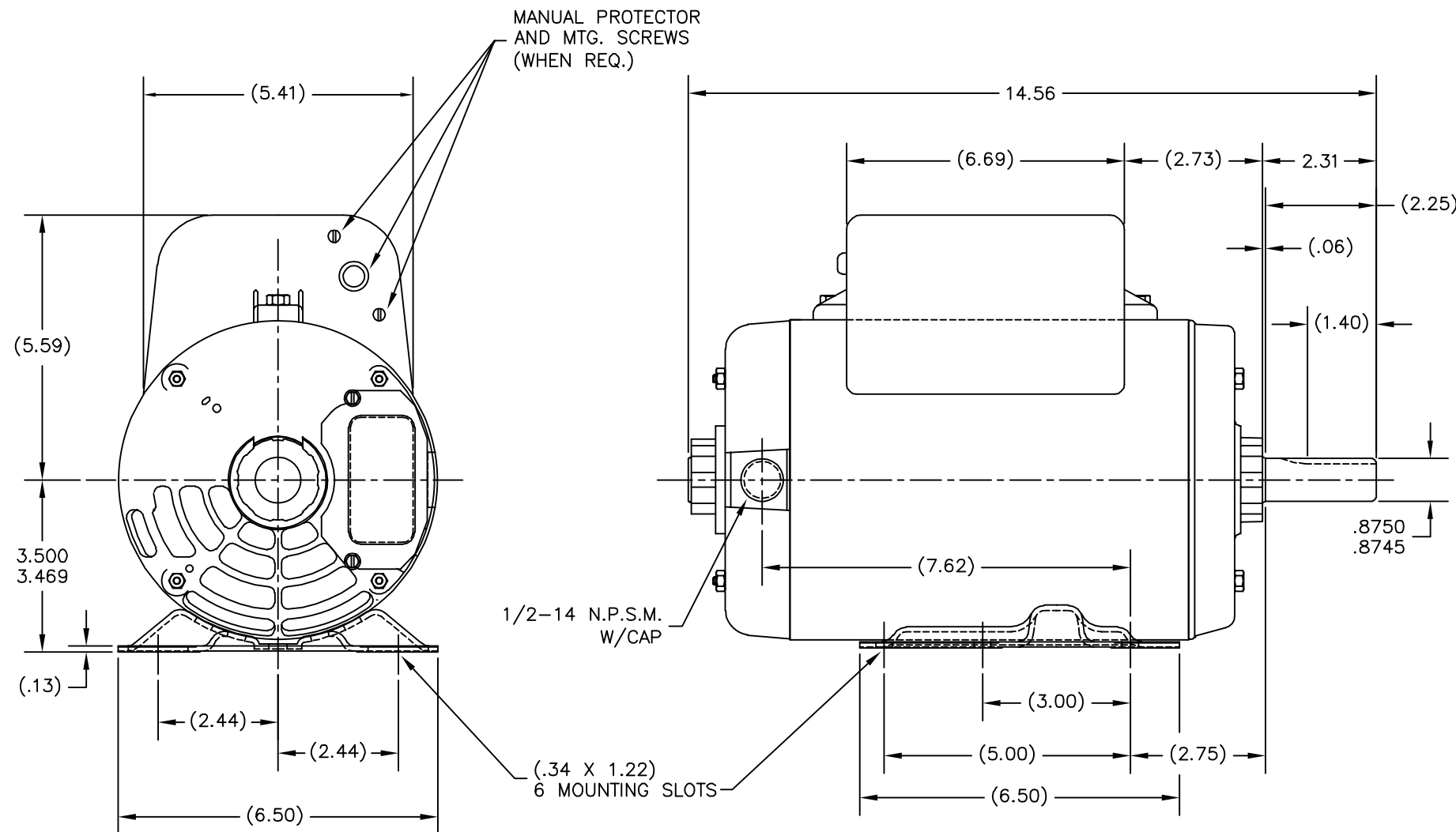
ESCALA: NONE

HOJA: 1

版本	ECO	编制	日期	批准	日期
E	0025366	J.M.Ramirez	04-13-2012	R.Rascon	04-13-2012

ALL DIMENSIONS SHOWN IN PARENTHESIS
ARE REFERENCE DIMENSIONS. ALL
OTHER DIMENSIONS ARE TOLERANCED PER
THE FOLLOWING CHART UNLESS
OTHERWISE SPECIFIED.

"C" DIM.	= +/- .055
SHAFT EXT.	= +/- .034
LEAD LENGTHS	= +/- 1.00
EXTENDED THRU-BOLTS	= +/- .050



NOTE:

TERMINAL BOX TO BE LOCATED
AT 12:00 WITHIN +/- 1 1/2"

形位公差
□ 平面度
— 直线度
∠ 倾斜度
⊥ 垂直度
// 平行度
○ 圆度
⊙ 圆柱度
△ 面轮廓度
∩ 线轮廓度
↗ 圆跳动
⊕ 位置度
⊗ 同轴度
≡ 对称度

ASME Y14.5M 1994

除另有注明
尺寸公差如下:

英寸	±.1	±.02	±.005	±.0005
毫米	±0.5	±0.13	±0.013	
角度	±.50	度		
清理毛刺和尖棱	英寸 .003-.015	毫米 0.1-0.4		
内圆角	英寸 .020	毫米 0.5		
表面粗糙度	英制 125	米制 3.2		

米制尺寸显示在[]

绘图:

JAH

批准:

第三角投影



图纸格式发布日期 11-11-2011
图纸格式版本 G

机密: 本图纸及相关信息所有权归REGAL-BELOIT CORPORATION。
未经REGAL-BELOIT CORPORATION书面授权, 不得泄露、
复制、传播或作其他用途。—版权所有



REGAL-BELOIT CORPORATION

名称

MODEL-CFHP-56FR
OUTLINE

图幅

C

图号

179714

比例

NONE

页号

1